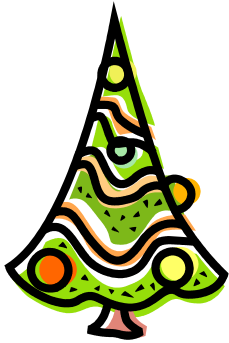




Westerville Quilt Guild

NEWS

Volume 9, No 11 — November/December 2013



December 3, 2013

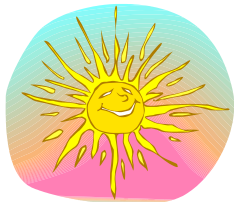
**Louise Maloy, Lynda Davidson, Tina Miller,
Presidents-of-the-Month**

Annual Holiday Party

Come and join your fellow WQG Members in celebrating the Holiday Season once again! Bring your Show and Tell! Bring your favorite beverage. Everything else will be supplied at the party!



And start thinking about what *you* can do as President-of-the-Month in 2014!



Westerville Quilt Guild Sunshine Committee

If you know of a member who is sick, has had surgery, or has had a death in the family, please contact **Christina Sidebottom** who will send a card.
E-mail: o-side@att.net, telephone: 614-895-9820 (home) / 614-208-2857 (cell).

SOCIAL TIME - Meet and Greet - Arrive Early When You Can...



Start gathering around 6:30. Greet friends & **MEET** new members. **Members:** This month make sure you find someone who you don't know so well, or a new member or guest you haven't met and introduce yourself. **New Members/ Guests:** If you are a new member/guest, approach someone you don't know and introduce yourself. Learn a tad about the other person and share a bit about yourself! We are a friendly bunch!

We meet on the 4th Tuesday of each month, 6:30 pm Social Time, 7:00 p.m. Meeting, at The Westerville American Legion Hall, 393 East College Avenue, Westerville, OH 43081, Web Site: <http://www.WestervilleQuiltGuild.com>, E-mail: info@westervillequiltguild.com



Charm Squares

Squares are 6 x 6 of quilt shop quality fabric. Drop off current month, pick up last month... etc. Here are the remaining months and themes:

November/December - Holiday

Christmas gift suggestions:

To your enemy, forgiveness.

To an opponent, tolerance.

To a friend, your heart.

To a customer, service.

To all, charity.

To every child, a good example.

To yourself, respect.

~Oren Arnold

Programs & Greeters for 2014



It's that time again! Time to think about being a President-of-the-Month and/or a Greeter! Get together with a friend and present a program on

something you love to do! Have a friend that can give a trunk show or lecture? Sign them up as your program! Whatever you feel strongly about and want to share with the group can become a program! Look for the sign up sheet at the next couple of meetings.



Tickets for the December "Reindeer Games" Raffle Basket will be on sale at the beginning of the meeting and during the meeting. The drawing will be at the end of the meeting. Tickets are \$1 or 6 for \$5. This month's basket is loaded with great "Reindeer" themed items, patterns, fabrics, and surprises!

2013 Committees

(Go to www.westervillequiltguild.com for committee information.)

Check this out for ideas of which Committee(s) you might like to join in 2014!



Mr. Frog Wants to Remind You:
Wear Your Name Tags or Pay the Penalty!

Newsletter Information

Newsletter submissions should be sent as an attachment or typed in the body of an email to the following email address: Newsletter@westervillequiltguild.com. The "publication" date for the Newsletter will be the 3rd Tuesday of the month. All items submitted to the Newsletter need to be in by the 2nd Tuesday of the month. If you know of a member that does not have access to email, please give them a copy of the newsletter.