



**Westerville Quilt Guild**

# NEWS

Volume 12, No 5 — May 2016



**May 24, 2016**

**Ruthie Hoover & Friends, Presidents-of-the-Month**

## **Answers to FAQQ**

**(Frequently Asked Quilting Questions)**



Should you wash fabric before using it in a quilt? How do you even up blocks donated by different sewers? How do you design your own quilt? These are three of the more than 40 questions that you asked at the February meeting. Five of our experienced quilters (Gayle Seeman, Annette Beachy, Carol Cleaves, Sue Newell, and Ruthie Hoover) will help us seek out the answers to our questions.----But, your thoughts and opinions are needed too. We are planning for some lively and thoughtful discussions. Come join the fun!

The books that were recommended at the April meeting are:

- ◆ *It's Not a Quilt Until It's Quilted* by Shirley Thompson
- ◆ *Quilter's Academy (freshman through master's years)* by Harriet Hargrave
- ◆ *1001 Patchwork Designs* by Maggie Malone
- ◆ *Quilter's Ultimate Visual Guide* by Ellen Pahl



### **NEW IN 2016!! Featured Quilter and Trunk Show**

At our March 22 meeting, Vickie Mills displayed 27 traditional, primitive, and Civil War quilts and decor items (see pictures on page 2). Coming soon will be the following talented members:

June 28 Contemporary Eclectic Quilts, JoAnne Guthrie-Hurst  
October 25 Quirky Quilts, Becky Dickson



### **SOCIAL TIME - Meet and Greet - Arrive Early When You Can...**

Start gathering around 6:30. Greet friends & MEET new members. **Members:** This month make sure you find someone you would like to know better, a new member or guest, and introduce yourself. **New Members/Guests:** If you are a new member/guest, approach someone you don't know and introduce yourself. Learn a little about the other person and share a bit about yourself! We are a friendly bunch!

We meet on the 4th Tuesday of each month, 6:30 pm Social Time, 7:00 p.m. Meeting, at The Westerville American Legion Hall, 393 East College Avenue, Westerville, OH 43081, Web Site: <http://www.WestervilleQuiltGuild.com>, E-mail: [info@westervillequiltguild.com](mailto:info@westervillequiltguild.com)



Tickets for the "Color My World: Turquoise" Raffle Basket will be on sale at the beginning of the meeting and during the meeting. The basket will contain fabrics, patterns, and other assorted Turquoise themed treats. The drawing will be at the end of the meeting. Tickets are \$1 or 6 for \$5.

## Westerville Quilt Guild Quilt



Plans continue for our fall quilt sale on October 15 at the Heritage Condominium Club House off Cleveland Avenue in

Westerville! The committee is currently working on publicity to attract as many shoppers as possible! And remember - when thinking about what YOU might donate, small projects are quick for you to make and affordable for our customers! Some suggestions for items to consider making are: tooth fairy pillows, mug mats, aprons, coasters, needle cases, bags, felted ornaments, small decorative pillows, 10 minute table runners and items appealing to children. Halloween ideas will be popular as well. We will collect your donations at the May meeting - and continue collecting through the September meeting. Forms will be available at the May meeting to be completed when submitting your donation. (Please see Karen Lesueur or one of the other committee members to submit your donations.)

Please call Amy Korn (891-8008) or e-mail at [amyokorn@hotmail.com](mailto:amyokorn@hotmail.com) if you have any questions.



### Fat Quarter Raffle!

This month's theme is *Nautical!* Bring your FQs in order to participate!

## 2016 Program Sneak Peek



June 28, 2016

Cindy Walton, Marilyn Murray, & Ginny Littleton, Presidents-of-the-Month  
WQG Annual Picnic Meeting  
*Note the new date!*

July 26, 2016

Annette Beachy & Amy Komula, Presidents-of-the-Month  
Fabric Bowls

August 23, 2016

Christina Sidebottom, President-of-the-Month  
Aminah Robinson, Artist



Quilts by Vickie Mills—our March Featured Quilter!

## PAINT CHIP CHALLENGE

You may still participate in the Fun with Fabric Committee's Paint Chip Challenge. Refer to the rules in the February newsletter and see Judy Theil at the meeting. Projects are due June 28!



Share A Square and  
Win a Bunch  
May Raffle Block  
Ohio Star

Fun with Fabric's (FWF) Share A Square - Win A Bunch May raffle block is the Ohio Star. For detailed block instructions, see the April WQG newsletter ([www.westervillequiltguild.com](http://www.westervillequiltguild.com)). Go to the Newsletter category.

**Pattern:** 12" (12 ½" unfinished) Ohio Star block pattern was published in the April newsletter or go to <http://www.mccallsquilting.com/patterns/details.html?idx=8252>.

**Fabric:** Kona white (#791-2454) for background and medium blue for the star. Pre-wash all fabrics.

**Raffle:** Submit one block for the member raffle and/or as many blocks as you want for the Fallen Fifteen veteran quilt donation. Each submitted block will receive a raffle chance for the May drawing.

**Donation Quilt Recipient:** Local nonprofit, the Fallen Fifteen, provides outreach to returning soldiers from the Iraq and Afghanistan wars. FWF members will construct a quilt from the donated Ohio Star blocks.

## Color Our World in 2016!

2016 WQG BASKETS - COLORS:

JUN Yellow  
JUL Blue  
AUG Orange  
SEP Brown  
OCT Pink  
NOV/DEC Gold/metallic

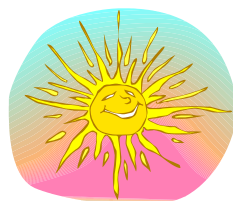


A donations basket will be available at the meeting for your donations! Thanks!



## WQG Quilts Going to the Fair?

Ohio State July 27 - August 7	<a href="http://www.ohiostatefair.com/creative-arts/">www.ohiostatefair.com/creative-arts/</a>  online entry only - due June 20; see previous email for details; \$10 processing fee + \$1 per entry
Franklin County July 16-23	<a href="http://www.fcfair.org/senior-fair-premium-book">www.fcfair.org/senior-fair-premium-book</a>  online or mail in entries - due July 9; quilts up to 10 years old; \$20 season pass + \$1 per entry
Delaware County September 17-24	<a href="http://www.delawarecountyfair.com">www.delawarecountyfair.com</a>  2016 guidelines not online yet



### Westerville Quilt Guild Sunshine Committee

If you know of a member who is sick, has had surgery, or has had a death in the family, please contact

Christina Sidebottom who will send a card.  
E-mail: o-side@att.net, telephone: 614-895-9820 (home) / 614-208-2857 (cell).

---

## Finish 16 in 2016 Challenge Group on Facebook



Do you LOVE Facebook? Are you looking for a group that might actually motivate you to complete some of those UFOs you have lying around? Do you enjoy "show and tell" so much that you can't wait to see more projects next month? If you answer yes to these questions, then this is the group for you!

The "Finish 16 in 2016 Challenge" Group was formed to encourage members to finish projects, post photos of them on the Facebook Group page, and see what other people are doing. It is a private group. You need to request to join and then be approved this helps to keep the "Trolls" away. (Just search for the group in your search bar - there is a Happy New Year 2016 banner).

Once you are a member, you can post completion of ANY project. Whether you finish a quilt, complete a knitted scarf, clean out a closet, WE want to see it. We'll cheer for you and encourage you to finish more! Tell your friends and spread the word. Any member may approve future membership requests.

Contact Sue Meek by [email](#) at or look for her on Facebook, if you have any questions.



## WQG Rolling Library

Please remember that we are starting the Rolling Library. If you have any books, patterns, or magazines that you would like to donate, please bring them to the January meeting and give them to DeeAnn Haworth, Marilyn Murray or Sue Meek. This will be an ongoing donation, so anytime you get tired of a book, etc. just bring it to the next meeting.



## Scrap Quilt Survey Revealed – Part 1 of 4

"A weed is just a misplaced plant - so is a scrap - a piece of fabric with no home and no plan. It can be any size, really just like a flower....very, very small to covering a whole wall." [Twiddletails.blogspot.com](http://Twiddletails.blogspot.com)

From our February scrap quilt survey, WQG members defined "scrappy" as: lots of fabrics; more than 25; mismatched; not intended to go together; at a glance the fabrics are not alike; projects made with small scraps; variety of fabrics randomly placed together; and a lot of color coordinated small pieces.

29 of the 31 survey respondents stated that their scrap stash would fill:

Grocery bag - 3

Grocery cart - 10

Grocery freezer - 9

Grocery store - 4

Other - 3 (convenience store; medium container; many boxes)

Stay tuned for more survey results revealed in upcoming newsletters!



**Mr. Frog Wants to Remind You:**

**Wear Your Name Tags or Pay the Penalty!**

---

## Newsletter Information

Newsletter submissions should be sent as an attachment or typed in the body of an email to the following email address: [Newsletter@westervillequiltguild.com](mailto:Newsletter@westervillequiltguild.com). The "publication" date for the Newsletter will be the 3rd Tuesday of the month. All items submitted to the Newsletter need to be in by the 2nd Tuesday of the month. If you know of a member that does not have access to email, please give them a copy of the newsletter. If you have any questions or suggestions, contact [Lisa Smith](#), WQG Newsletter Editor.

---